



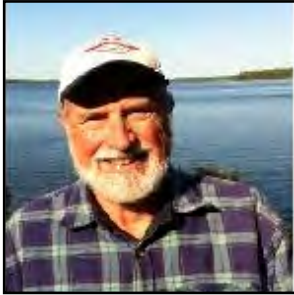
# NORTH & SOUTH TWIN LAKES RIPARIAN ASSOCIATION



SPRING/SUMMER 2017

[WWW.NSTLRA.COM](http://WWW.NSTLRA.COM)

P.O. BOX 163, PHELPS WI 54554



## PRESIDENT'S MESSAGE

To be meaningful, every organization needs to be refreshed with new talent. The board's transition between generations has not only gone smoothly but has been hugely productive in the process. We've been joined over the past two years by Treasurer Joe Fritzsche, Lake District Chair Michael Wade, Social/Publicity Chair Amy Peplow, Secretary Susan Pamperin, Lake Management Chair Jay Wittman, and Peter Gloede. These folks have demonstrated great talent, skills, and commitment to NSTLRA and to preserving and protecting our Twin Lakes. We are very fortunate to have three of our officers living year-round on our lakes and four directors who represent at least two generations of Twin Lakes families. NSTLRA is community!

In this newsletter, you will see articles that represent the efforts of the board of directors throughout the year. To all of us, the two most compelling initiatives are the Lake Management Plan for addressing invasive species and protecting our lakes and the proposed Lake District. Over the past ten years we have learned a great deal about Eurasian Milfoil (EWM) and how best to treat it. This has clearly been confirmed by the continued support we have received with WI DNR providing partial funding toward treatment and updating our Lake Management Plan. As illustrated by the recent experience on South Twin, we now know that every 3-5 years we will need to do whole lake treatments to avoid the strangle-hold of EWM that we experienced on South Twin in 2015.

We now face a new challenge: increased EWM emergence on North Twin. North Twin is a very large body of water and the three EWM locations are scattered in different locations. Whole lake treatment is not possible, but for 2017 we hope to be doing spot treatment instead of weed pulling. It's a new challenge, where we will again need to get a better understanding of conditions, how they can be treated and paid for.

At last year's annual meeting the NSTLRA members in attendance supported the board's recommendation that we form a Lake District with the ability to levy a tax to pay for the EWM treatments on North and South Twin Lakes. That petition package is now in your hands and we urge you to support the formation of the Lake District.

Our efforts aren't just dealing with these issues, as Amy Peplow has shown in our social program for 2017. Those of us who attend the Phelps Centennial celebration fondly recalled the lake tours. I distinctively remember being on Doug Best's boat and he seemed to know every place and person on the lakes! So Amy and team are bringing the lake tours back for 2017.

I would be remiss if I didn't thank a few other folks who add so much value to our efforts:

- VP Bob Bailey who maintains and produces our Annual Membership Directory
- Margot Peterson our Newsletter Editor (two issues a year!)
- Susan Pamperin, who not only maintains our minutes but also initiates all our email messages to members
- Pat Nebel, our webmaster, who six years ago secured our domain name and rebuilt our website

We have two beautiful lakes and a very engaged and supportive NSTLRA community,

Thanks to all!

**Roger Ganser,**

### Summer 2017 NSTLRA Schedule of Events

July 8, Annual Meeting and Pot Luck  
July 15, Poker Run  
July 28, Golf Outing  
August 12, Historical Pontoon Cruise

Stay Informed and Up to Date

[www.nstlra.com](http://www.nstlra.com)  
[www.phelpswi.us/events](http://www.phelpswi.us/events)  
[www.conover.org](http://www.conover.org)

## Lake District Task Force Update ...



Just to extend the opening message in this newsletter, NSTLRA is **“Community”**. A community which cares not only for its membership, but also for the pristine waters we live on and recreate.

Because of this inner fabric of caring your NSTLRA Board of Directors and Officers made a conscious decision in 2016 to form a **“North and South Twin Protection and Rehabilitation Lake District”**. As was stated previously, by now you should have received your individual petition package. We strongly encourage everyone to support this very important initiative.

2016 was a very busy year for your NSTLRA Lake District Task Force. It began in developing the Lake District petition packet of materials, continued by engaging with a respected Lake District legal resource, connecting with the Vilas County Land and Water Department for both guidance and education in navigating a successful journey of a Lake District initiative, contracting the services of a reputable surveyor, and culminated with the mailing and distribution of your Lake District packet materials.

Your NSTLRA Board of Directors and Officers attend many of the local and state sponsored events, related to protecting and preserving lake waters and learning about support resources that will assist in the aquatic challenges that come with the management and stewardship of Wisconsin lakes. There is an ever present mantra which resonates within one after connecting with these resources and that mantra simply stated is **“Healthy Lake, Happy Lake”**.

NSTLRA shares the belief that a **“North and South Twin Protection and Rehabilitation Lake District”** is the vehicle for building a **“Happy Lake”** for generations to come. The time has come to focus beyond aquatic invasive species and begin looking at additional activities to nurture this vital aquatic resource.

We have two beautiful lakes and a very supportive NSTLRA community and for that we are eternally grateful ...

**Please sign, date, and return your “North and South Twin Protection and Rehabilitation Lake District” petition ... We need 51% or greater of the qualified property owner signatures in the proposed Lake District boundary and NSTLRA is counting on you ...**

**NSTLRA ... Sharing our Commitment to a Healthy Lake ...**

Your NSTLRA Lake District Task Force ...

## Membership Update

The 2016 NSTLRA Membership (covering July 1, 2016 to June 30, 2017) is 274. This is an increase of 29 from the 2015 level of 245 - a 12% increase.



Thank you to all who joined and thank you to all who contributed to the AMEN Fund to help address the milfoil issue.

The 2017 Membership renewal material was recently mailed. Your Membership supports the care of our lakes. Your Membership payments enable NSTLRA to publish the newsletters, maintain the website ([NSTLRA.com](http://NSTLRA.com)), participate in lake education and planning meetings, and deploy nearly 14 navigation buoys on our lakes.

As you make your Membership payment, please consider a tax deductible donation to the AMEN Fund. The cost of treating South Twin in 2016 reduced our Fund balance. It is important to replenish the AMEN Fund as we need to cover 50% of the cost to treat the milfoil on North Twin this year.

**Thanks for your commitment and support for caring for our lakes.**

**Joe Fritzsche, Treasurer, ([treasurer@nstlra.com](mailto:treasurer@nstlra.com))**

## Annual Meeting & Potluck, Saturday, July 8, Phelps, Starts at Noon

### Potluck Assignments to Serve at Least 8

A-H Dessert  
I-P Meat or Casserole  
Q-Z Salad or Vegetables



Contact Katherine,  
[knaherny@gmail.com](mailto:knaherny@gmail.com), or  
715-545-3650 if you can help set up,  
serve or clean-up.

Thank you to all of our volunteers!





*Bob doing what came naturally. Bob and his wife, Barb, were gracious hosts and organizers for the NSTLRA FishBoil fundraiser, contributing precious time and resources to the health of the lakes.*

### ***In Memoriam***

*It is with profound sadness that we note the recent passing of cherished members of the NSTLRA, Bob Clem, Ben Vandenhueval, and Dorothy Hash. These individuals and their families have devoted countless hours to the health and enjoyment of our lakes and community.*



*Ben, second from left, enjoying life with some of his many lake friends. Ben and his wife Priscilla chaired the Adopt-a-Highway committee for many years removing trash and beautifying the area for all us.*

*Dorothy's parents purchased their cottage on South Twin in 1949. In the 70s Dorothy and Steve remodeled it and continued to fill it with family and lake memories.*



*Dorothy and Steve Hash. Photo was taken at the Sundown in 2014*



Sitting on the dock and gazing at the night sky is a privilege enjoyed by many in northern Wisconsin. We were doing just that on the nights leading up to July 4. As vacationers arrived for the holiday, lake-front homes became increasingly evident at night by their dock, yard, and house lights. The ring of lights around the lake grew noticeably brighter. Lighting one's property at night is often temporarily necessary for safety or for an evening outdoor activity. Yard lights can also help create a cozy and warm ambience. Unfortunately there is a dark side to turning on those lights. As lights turn on, they add to the diffuse glow from Eagle River and other towns and the night sky gradually loses darkness. The loss of a dark night sky seems impossible here in Vilas County, but it has already partially happened. Why is losing night darkness a loss? The visibility of stars, planets, meteors, satellites, and the moon are directly proportional to darkness. As darkness disappears, so does the visibility of all celestial bodies. Many children living in urban and suburban settings have never seen the Milky Way. As the glorious night sky disappears, so does the human connection to the cosmos. When that connection is lost, we tend to see our town, our country, our planet as the center of everything. They aren't. Perhaps the surest way to calibrate our true position in the universe is to periodically look up at the night sky and see a breathtaking number of stars. Today this is only possible by leaving population centers and visiting truly dark places (<http://darksy.org/>).

So, lakefront homeowners, help promote night darkness by eliminating unnecessary outside lights, shielding lights, and aiming them downward. Preserve some darkness and let the night sky come alive. Late-night dock sitters thank you.

**Brad Rehnberg and Emily Bates**

(This article ran in the Vilas County News in 2016. Brad and Emily are NSTLRA members and long time residents of South Twin)

## Happenings on Our Lake and in Our Communities -

Registration is now open for the Third Annual Twin Triathlon. The "Twin Tri" will be held on August 26th, 2017 on North Twin Lake in picturesque Phelps, Wisconsin.

The triathlon includes an 8K paddle on beautiful North Twin Lake and a 16K bike and a 5K run through the Vista Lake Bike Trails. Participants can choose to register as an individual, as part of an adult team consisting of three members all over 16 years of age, or a family team that includes at least one of three participants under the age of 16. Individual registration is \$35, and teams are \$90 and includes t-shirts for all registrants.

This relaxed race is ideal for families and participants of all skill levels. With scenic rolling hills and wide open waters, the route will present a challenge but one that all will enjoy. For more information or to register, please visit [www.Phelpswi.us/twin-triathlon](http://www.Phelpswi.us/twin-triathlon) or call **715-545-3800**

### Summer Fun

A number of fun and exciting events will take place in our lake communities this Summer. Be sure to mark your calendars ..... You won't want to miss the fun!!!

June 11th - Conover - **A Ride in the Park** - Town celebration for bike trail, equestrian trail, ATV trail, snowmobile trail, xc ski/hiking trail and more. Food and beverage available. (12 pm - 3 pm)

June 11th - **Chain Skimmers First Water Ski Show** - Lake Pleasant, Conover - 7 pm.

June 16th-17th - **Twin Lakes Music Festival** - Downtown Phelps - Free admission.  
Food & Beverages available for purchase. Proceeds benefit youth sports.

June 25th - **Taste of Conover** - Enjoy fabulous foods from local businesses! (11 am - 3 pm)

July 2nd - **The Phelps 4th of July Celebration** is an all-out extravaganza that takes place right on the beautiful shore of North Twin Lake in downtown Phelps.

The festivities kick off with the parade at 3 pm, kids activities, music and food all culminating with the best fireworks show in the Northwoods over beautiful North Twin Lake!

July 4th - Conover - **Parade** - 1 pm. **Lions Club Picnic** - 4:30 pm - 8:30 pm.

August 12th - Conover Chamber "**Oktoberfest**" - Music, food and beverage! - 4:30 pm - 8:30 pm.

August 26th - Phelps - **Twin Triathlon**

For more information about individual events and other happenings check out:

[www.conover.org](http://www.conover.org)

[www.phelpswi.us/events](http://www.phelpswi.us/events)

Thanks to **Joyce Wade** for compiling the above information.

### Swimmer's /Duck Itch

Swimmer's itch, also called cercarial dermatitis, appears as a skin rash caused by an allergic reaction to certain microscopic parasites that infect some birds and mammals. These parasites are released from infected snails into the lake water. If the parasite comes into contact with a swimmer, it burrows into the skin causing an allergic reaction and rash, these larvae cannot develop inside a human and soon die.

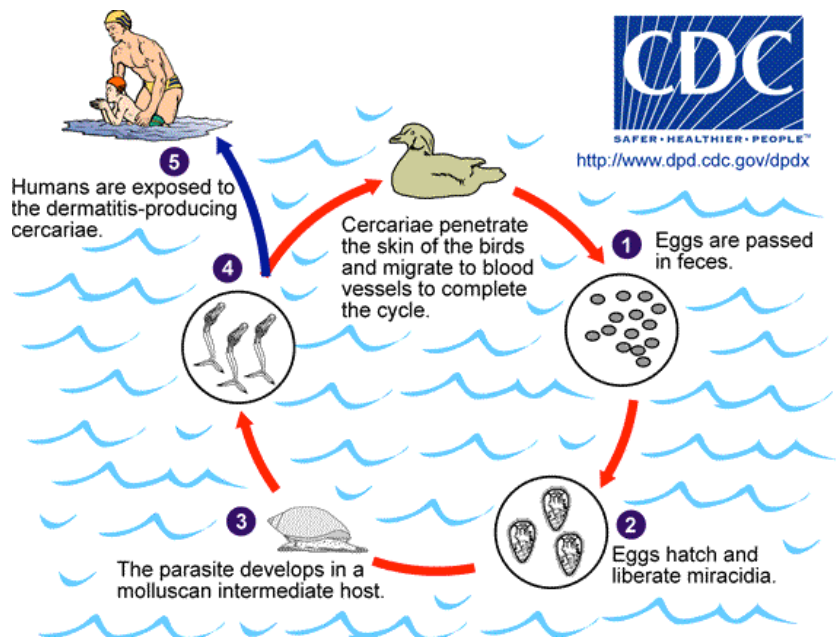
#### To reduce the likelihood of developing swimmer's itch

Before entering the water, apply a heavy coat of oily sunscreen to clog pores.

Do not swim near or wade in shallow or marshy areas where snails are commonly found.

Towel dry or shower immediately after leaving the water.

Do not attract birds by feeding them.







# NSTLRA POKER RUN



**Saturday July 15, 2017**

**Start Time: 1:00**

Come join us for the annual North and South Twin Poker Run by boat! This is a fun way to get involved, meet neighbors on the lakes and raise money for our Lake Association. There will be 7 stops to pick up cards for your poker hand. The cost is \$10/person. Starting dock is the Peplow's, near Lakota landing, denoted by a red flag on the pier. Please plan on arriving at the 1<sup>st</sup> pier any time between 1:00 and 2:30. There you will pay your \$10, pick up your map and tally sheet and continue on your way. We will also have a car drive-up from 10:00 to 12:00 on that day at 4276 Pine Knoll Lane (off Lakota Road) where you can purchase your first card and get your map and tally, if that works better for you.

All participants should come to Dublin's at 5:00 where the tally sheets are turned in and winners revealed! Food and drinks will be available for purchasing by each individual. A fun summer party!

Keep July 15<sup>th</sup> open when planning your summer activities and join in the fun while supporting the lakes.

Hope to see you there!

**Questions ?? Call Amy Peplow (630) 217-2102**

## LOON WATCH



As of April 22, a few loons have been spotted. Loon Watch data from Northland College suggests that North/South Twin are non-breeding lakes. However, last summer loon chicks were seen on an adult's back here on South Twin. Help me further disprove that notion by keeping watch for loons with chicks. Please call or e-mail me with any sightings of chicks, courting, fights, etc. including the approximate area where seen. Thanks.

**Karen Moore**

**715-545-2883 or karemoore2883@gmail.com**

Winter is over and it's time to start thinking about heading to the lake. It also means that our great lake apparel will be available once again. If you haven't had a chance to purchase your North Twin and South Twin sweatshirts or t-shirts, please feel free to give me a call or look for me at the lake association meeting and poker run. I have had many requests for the lake decals so this year I will be adding them to the many other items we have available. As a reminder, all proceeds go to NSTLRA.

**Laura Babe  
414-975-8147**



## North South Twin Lakes Riparian Association - NSTLRA - [www.nstlra.com](http://www.nstlra.com)

### OFFICERS

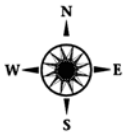
President: Roger Ganser	715-545-3650 / 608-345-2703	president@nstlra.com
VP: Robert Bailey	715-479-8971	rnb3247@frontier.com
Treasurer: Joe Fritzsche	715-340-4535	treasurer@nstlra.com
Secretary: Susan Pamperin	715-545-2329 / 608-438-8874	secretary@nstlra.com

### DIRECTORS

Peter Gloede (Lake District Task Force)	847-363-4570	peterg@nstlra.com
Amy Peplow (Social & Publicity)	630-217-2102	apeplow@gmail.com
Margot Peterson (Newsletter)	847-370-1071	margot.peterson@sbcglobal.net
Mike Wade (Lake District Task Force)	630-881-0325	nstlakedistrict@nstlra.com
Joe Wallace (Emeritus)	715-479-8083	joesuzanne@frontier.com
Jay Wittman (Lake Management)	715-574-9531	jjwittman@charter.net

### COMMITTEE CHAIRS

Adopt A Hwy: John & Rosemary Passer	715-891-0750	rjpasser@frontier.com
Fishing: Marty Primich	715-545-3474	mjprimach@gmail.com
Loon Watch: Karen Moore		karemoore2883@gmail.com
Merchandise: Laura Babe	262-786-1076	lebabe@wi.rr.com



**NSTLRA**  
**PO BOX 163**  
**Phelps, WI 54554**

**Thank you to John and Rose Passer for chairing the NSTLRA Adopt-a-Highway committee and the many hours they have spent cleaning trash up from the roadways.**

Make sure to attend the NSTLRA annual meeting and potluck  
**July 8 in the Phelps park**

You can sign up for the Golf Outing and learn more about the Historical Pontoon Cruise at the meeting.

**The Clean Boats/Clean Water position is open.**

You might just be the perfect person to fill it.

If interested in learning more, please contact a NSTLRA director.

By late summer the **Conover-Phelps Biking and Walking Trail** will be almost 9 miles long, with a trailhead and parking area north of Cty K at Song Hill Lane! Many thanks to all NSTLRA members whose contributions have helped make this happen, visit [www.ghtrails.org](http://www.ghtrails.org) to learn more or to donate.