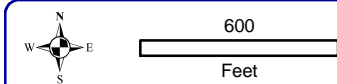
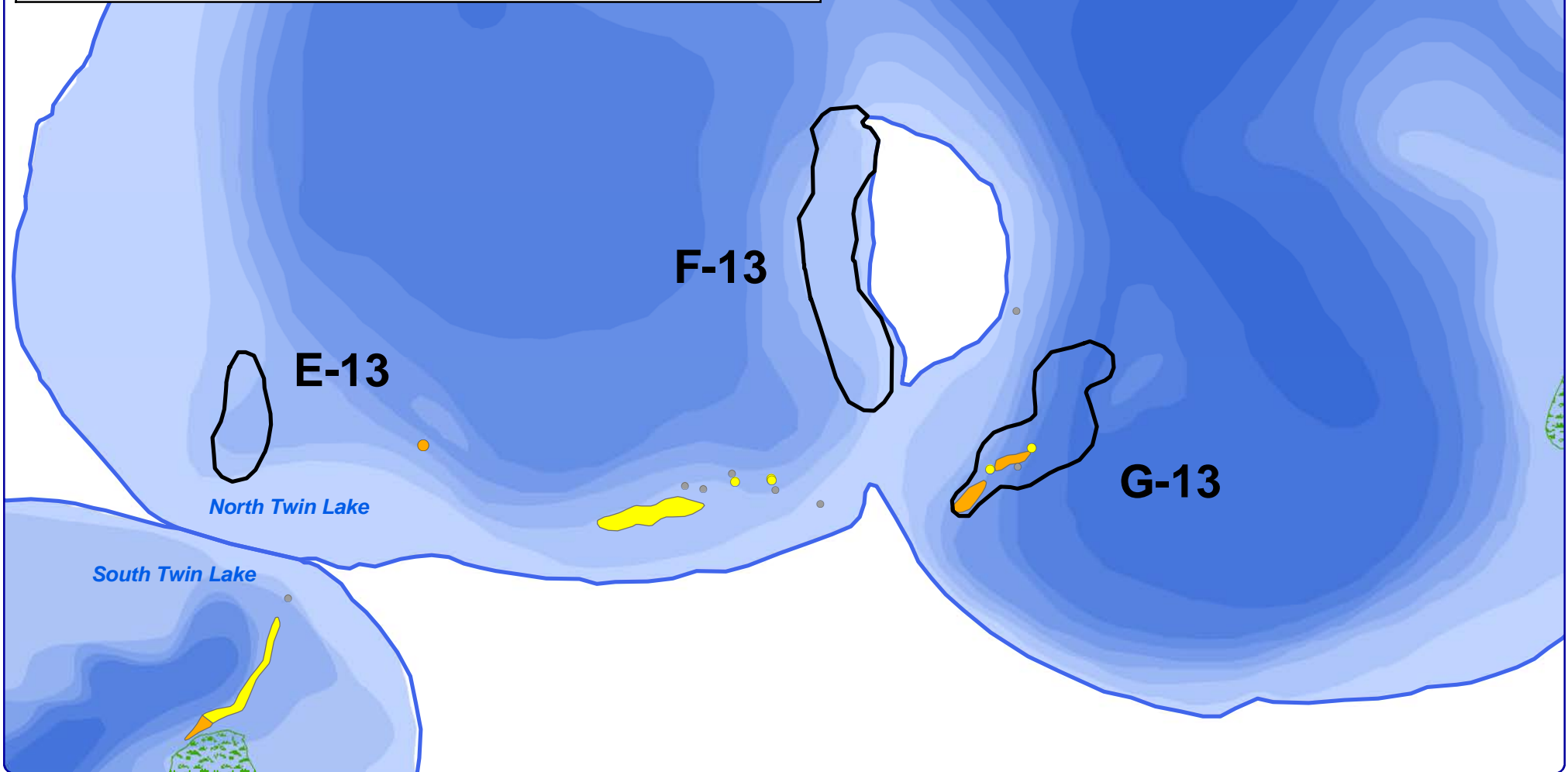


2013 Final EWM Treatment Strategy

Site	Proposed Acres	Final Acres	Ave Depth (feet)	Volume (acre-feet)	Herbicide Product	Dose
E-13	1.6	1.9	9	17.1	Diquat	0.17 PPM caton ²
F-13	5.8	5.8	7	40.6	Triclopyr & 2,4-D	5.00 PPM ae
G-13	4.1	4.1	7	28.7	Triclopyr & 2,4-D	5.00 PPM ae
Total	11.5	11.8		86.4		



- Legend**
- Eurasian water milfoil Locations (September 2013)**
- Highly Scattered
 - Scattered
 - Dominant
 - Highly Dominant
 - Surface Matting
 - Single or Few Plants
 - Clumps of Plants
 - Small Plant Colony

- 2013 Final Treatment Area
- Hardstem Bulrush-dominated Community
- Public Access

Onterra LLC
 Lake Management Planning
 815 Prosper Road
 De Pere, WI 54115
 920.338.8860
 www.onterra-eco.com

Sources:
 Roads and Hydro: WDNR
 Bathymetry: WDNR, 1971; digitized by Onterra
 Aquatic Plants: Onterra, 2013
 Map Date: September 25, 2013
 Filename: NSTwin_EWM_Sept13.mxd

North Twin Lake
 Vilas County, Wisconsin
2013 EWM Locations